

MONTHLY MEMBERSHIP PROGRESS REPORT

LOCATION INDIA

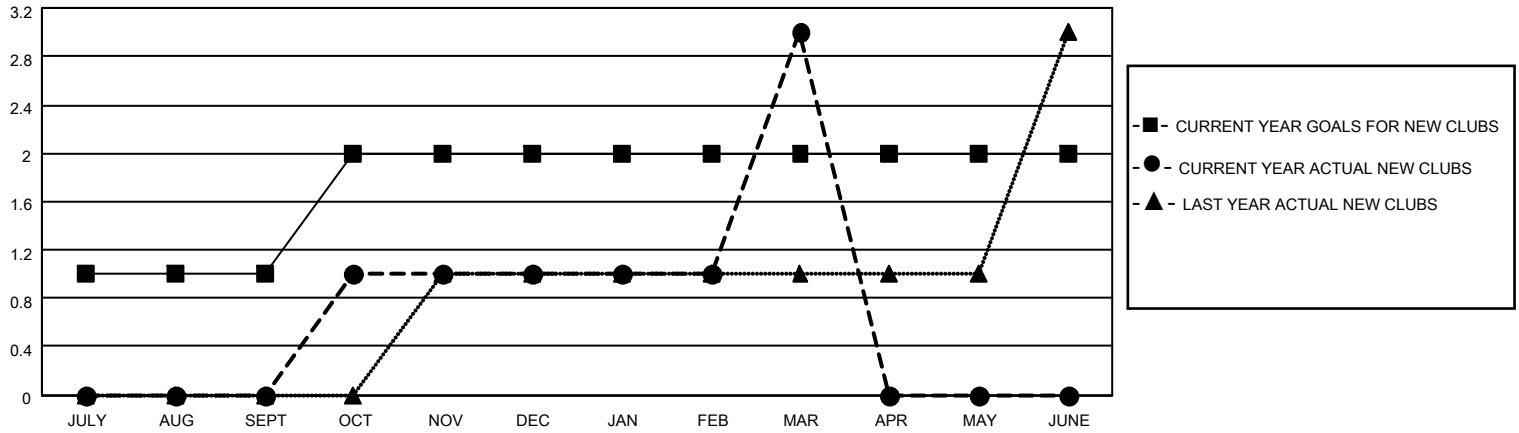
District 316 G

Results as of: 3/31/2023

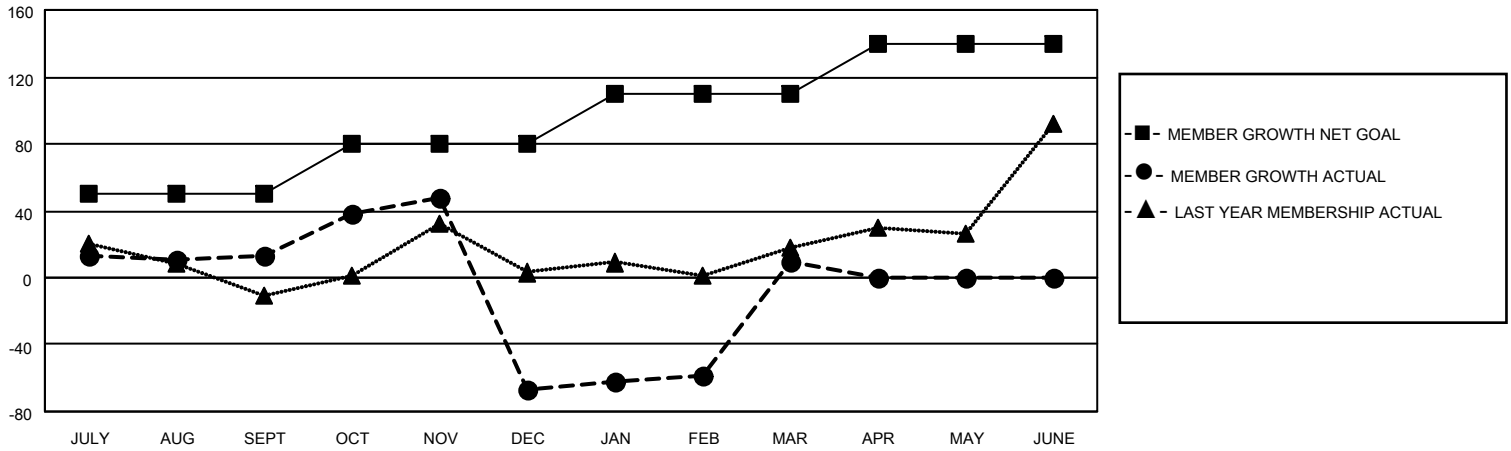
Clubs			
RESULTS FOR 2022-2023			
QUARTER	NEW CLUB GOAL	NEW CLUBS	DROPPED CLUBS
JULY/AUG/SEPT	1	0	2
OCT/NOV/DEC	1	1	3
JAN/FEB/MAR	0	2	0
APR/MAY/JUNE	0	0	0

Members			
RESULTS FOR 2022-2023			
QUARTER	MEMBER GROWTH NET GOAL	MEMBER GROWTH ACTUAL	DROPPED MEMBERS ACTUAL (including transfers)
JULY/AUG/SEPT	50	67	51
OCT/NOV/DEC	30	57	136
JAN/FEB/MAR	30	100	2
APR/MAY/JUNE	30	0	0

GOALS AND ACTUAL NEW CLUBS CUMULATIVE



GOALS AND ACTUAL MEMBERS CUMULATIVE



DROPPED CLUBS: 5

32 CLUBS OF 71 ADDED 1 OR MORE NEW MEMBERS

GENDER DISTRIBUTION

DROPPED MEMBERS

DECEASED	14
CLUB CANCELLED	96
OTHER	79
TOTAL	189

[CLICK HERE FOR CUMULATIVE MEMBERSHIP DATA](#)

MALE	2,133 (80.40%)
FEMALE	520 (19.60%)
NON BINARY	0 (0.00%)
PREFER NOT TO ANSWER	0 (0.00%)

TOTAL FAMILY UNIT MEMBERS 1,191

FAMILY MEMBERS PAYING HALF DUES 754